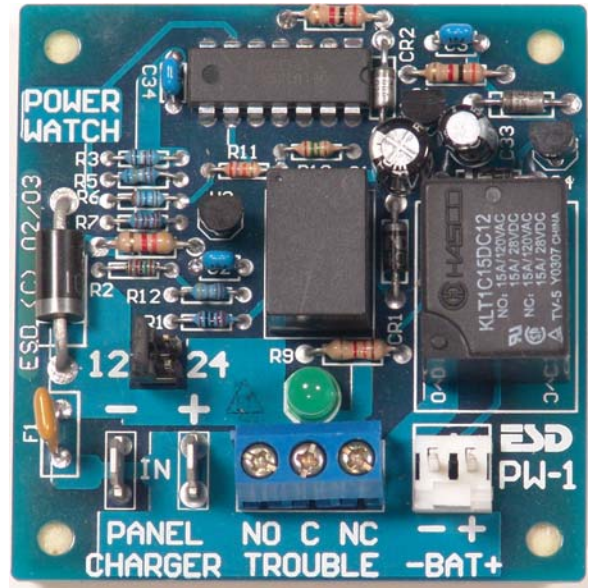


PW-1 Power Watch Module
12vdc/24vdc Battery Supervision Module
Made in the USA with a Life Time Warranty

PW-1 Features:

By simply plugging the PW-1 In Line with the Battery Connectors Adds the Following Features:

- **Form “C” Contacts that Indicate:**
AC Power Fail
Low Battery (about 70% capacity remaining)
Battery Over Charged
- **Green LED ON Indicates Normal Power**
- **Battery Cut off Relay Removes Load from Battery When Depleted to Prevent Deep Discharge.**
- **Selectable 12VDC or 24VDC Lead Acid Battery(s)**
- **Precision voltage reference provides accurate trip points.**
- **Reverse Polarity Protected**
- **Lead Free RoHS**



Description

The PW-1 adds battery supervision to almost any control panel or battery charging circuit that uses sealed or wet 12V or 24V lead acid battery(s). The PW-1 monitors the battery charging voltage. When the voltage is too low or too high the Green LED will turn off and the Trouble contacts will go to the off-normal condition to signal trouble. The PW-1 also disconnects the battery from the circuit when battery voltage reaches its service limit. The PW-1 can be set to monitor 12vdc or 24vdc lead acid batteries.

Instructions

1. Mount the PW-1 near the stand by battery(s) with stand offs, or on the battery with the pre-attached double-sided tape.
2. Be sure voltage jumper on the PW-1 is set match your 12V or 24V charging system.
3. Remove slip on connectors from battery(s) and push on PW-1 module. Observe polarity.
4. Attached provided battery cable on the PW-1 to the battery(s).
5. Connect trouble contacts to annunciate trouble. “NO” is Normally Open when power is normal. “C” is common. “NC” is Normally Closed when power is normal.

Specifications

Ambient Operating Temperature Range . -30°F to 130°F
 Storage Temperature -60°F to 190°F
 Battery Cutoff Voltage 12v/24v 9.8VDC/19.6VDC
 Battery Relay Contacts - Load and Charge Max 15A
Battery Cutoff Relay is normally energized for fail-safe operation
 Power Trouble, Low Voltage, Low Battery, AC fail
 12v/24v 12.1VDC/24.2VDC
 Power Trouble, High Voltage 12v/24v 14.0VDC/28.0VDC
 Trouble Contacts form C 2A/120vac/1A 240vac resistive
 3 Position Terminal block marked “NO C NC Trouble”
Trouble Contacts markings NO, C, and NC are shown Normal, no alarm condition. Relay is normally energized for fail-safe operation.
 Power Trouble LED Indicator On Green Normal
 Current Draw w/ Power On Both Relays Energized 45mA
 Overall Size Module 2.42H” x 2.36”W x 1”D
 Mounting Holes Center to Center
 (4 holes) 2.06”H x 2.00”W
 Specifications are Subject to Change without notice.



Electronic Security Devices
 6111 Southfront Road, Suite J
 Livermore, CA 94551

03/25/08 © Technical Literature jdb PW-1 specifications subject to change
 \products\PW-1\PW1Techsales.doc

Manufacturers of High Quality Security Devices

Phone: (925) 243-8990 Fax: (925) 243-8999
 ESD@SecurityPower.com www.SecurityPower.com